

Member Agencies

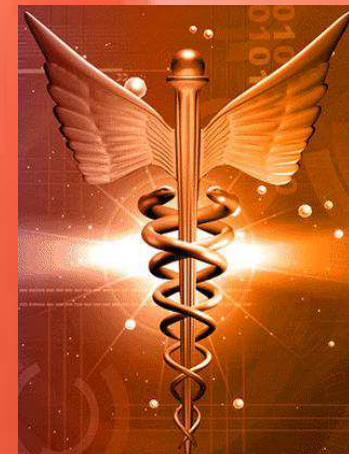
Commission on Higher Education (CHED)
Commission on Human Rights (CHR)
Commission on Population (POPCOM)
Dagupan Doctor's Villaflor Memorial Hospital (DDVMH)
Department of Environment and Natural Resources (DENR)
Department of Health - Center for Health Development (DOH-CHD)
Department of Science and Technology (DOST)
Don Mariano Marcos Memorial State University (DMMMSU)
Ilocos Training and Regional Medical Center (ITRMC)
Lyceum Northwestern University (LNU)
Mariano Marcos Memorial Hospital and Madical Center (MMMh&MC)
Mariano Marcos State University (MMSU)
National Economic and Development Authority (NEDA)
National Nutritiuon Council (NNC)
National Statistics and Coordination Board (NSCB)
Northwestern University (NWU)
Philippine Information Agency (PIA)
Region 1 Medical Center (R1MC)
University of Northern Philippines (UNP)
Virgen Milagrosa University Foundation (VMUF)



Region 1 Health and Research Development Committee
(R1HRDC)

STRATEGIC AND TACTICAL PLAN

(CY 2009 - 2015)



VISION

CORE VALUES

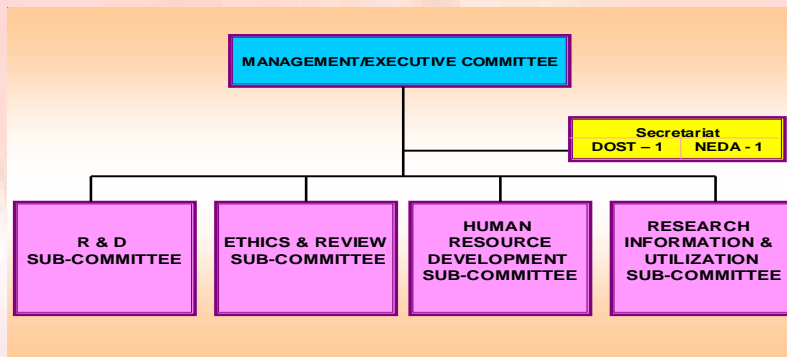
MISSION

**OPERATIONAL
PLANS**

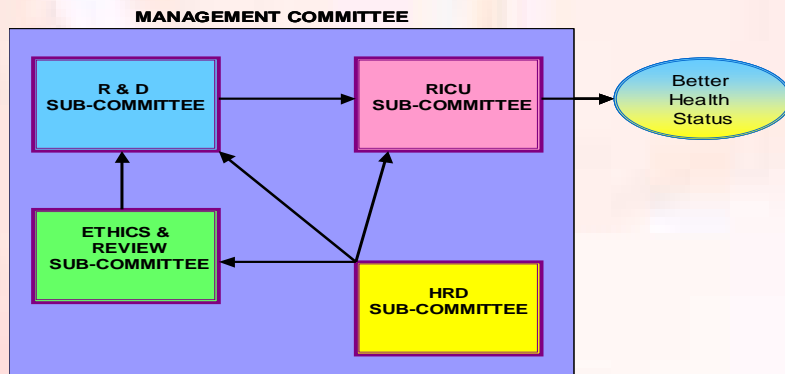


REGION I HEALTH RESEARCH AND DEVELOPMENT COMMITTEE (R1HRDC)

ORGANIZATIONAL STRUCTURE (Formal)



Operational Linkages of Subcommittees in the RHRDC



Vision

- We envision the R1HRDC as a strong and capable consortium, networking with local, national and global partners, propagating a research-oriented culture guided with the highest ethical standards, through sustainable and collaborative generation of timely, accurate and responsive information for local and national health planners, policy makers and managers and the general public at large, ensuring its contribution to the achievement of a better quality of life especially for the region's marginal groups.

GOAL 2: Continue to be responsive to the training needs of the health researchers in the region

Medium-term strategies

- Identify the training needs of the health researchers in the region
- Align the trainings to research activities that specifically meet the methodological requirements of priority research areas identified in the National Unified Health Research Agenda and those of the regional priorities



Short-term strategies

- Develop, conduct and analyze training needs survey among health research institutions in the region
- Develop and implement a research training program for health researchers in the region

Actions/ Measures/ Projects	Targets	Performance indicators	Cost Requirements
1. Training needs survey for health researchers	1 Research survey of training needs of health researchers in Region 1 for 2009	- Number of questionnaires returned for analysis and consolidation	P1,000.00 (sent by fax)
2. Development of a research training program for health researchers in Region 1	1 three-yea Health Research Capability Building Program for Region 1	- Dissemination of the copy of the program to concerned institutions -Implementation of the health research capability-building program	P5,000.00
3. Evaluation of research capability programs of the R1HRDC by member institutions	1 survey on responsiveness of R1HRDC to the training needs of the researchers in Region 1 for 2009	- Number of questionnaires returned for analysis and consolidation	P5,000.00

- ❑ Develop a pool of health research experts and consultants in the region
- ❑ Assist the member-institutions in the enhancement of promoting a culture of research in their respective agencies

Short-term strategies

- ❑ Update the directory/list of trainees (and eventually trainers and pool of experts) on health research from the region
- ❑ Promote peer mentoring between senior researchers and students among the consortium members
- ❑ Continue to conduct trainings/writeshops both for trainers and research investigators in the region
- ❑ Tap/Invite experts in the field of research to serve as resource speakers and consultants for research capability building and actual conduct of researches by research investigators
- ❑ Expose trainees to ongoing researches of experts in the actual research site for experiential learning
- ❑ Suggest to heads of institutions a review of tenure procedures and incentives given to their researchers and the balancing of teaching, scholarship, research and service especially among higher education institutional members of the consortium

Actions/ Measures/ Projects	Targets	Performance indicators	Cost Requirements
1. Conduct of trainings or writeshop on preparation of research proposals	2 Writeshops: a. Preparation of research proposal	- Number of research proposals written and approved for funding	135,000 X 3 trainings for 3 days each (30 pax) = Php 405,000.00
	b. Ethics in Research in using humans and laboratory animals in health researches	- Ethically Sound research methodologies - Number of Published researches	
2. Conduct training/ writeshop on developing a pool of experts	3 Writeshops: a. Research Ethics	- Directory or listing of the region's pool of experts on health research	187,500.00 X 3 writeshops for 5 days each (25 pax) = Php 562,500.00
	b. Research designs/ methodologies	- Number of research proposals written and approved for funding	Honoraria for all trainings: P150,000.00
	c. Statistical Analysis and interpretation	- Ethically Sound research methodologies - Experts seated as advisers or oral examination committee members in proposals - Number of Published researches	
3. Re-orientation program for presidents and heads of the member-institutions of the consortium on the programs and activities of the R1HRDC training/ writeshop on developing a pool of experts	1 Orientation program for heads of institutions of consortium members for the year 2009	Attendance and Consistency of attendees in the trainings	P400.00 X 35 pax = 14000.00
	2 observation visits of actual researches in research sites by established health research institutions	Increased Number of funded researches	
4. Observation of actual and on-site visits to research sites conducted by established health research institutions		- Number of research proposals written and approved for funding - Ethically Sound research methodologies	800.00 (in 2 sites) X 3days (10 pax) = P144,000.00 Fare (Southern Luzon): P1,500.00 X 10pax = P15,000.00

Vision: A Summary

Institution	Processes (4 Cs)	Outputs	Impact
<ul style="list-style-type: none"> • Network: <ul style="list-style-type: none"> ✓ Local, national, global ✓ Private, Public • Research Culture: <ul style="list-style-type: none"> ✓ Ethical standards ✓ Sustainable ✓ Collaborative • Stakeholders <ul style="list-style-type: none"> ✓ Planners/ policy-makers ✓ General Public ✓ Researchers 	<ul style="list-style-type: none"> • Commitment • Convergence • Collaboration • Complementation 	<ul style="list-style-type: none"> • Timely • Accurate • Responsive <p>Health and Health-related INFO</p>	Better quality of life especially for the poor and marginal groups

Mission

Guided by our vision, we commit to fulfill the following mandates:

- ❑ We will faithfully cultivate a research culture that champions the highest level of competence, integrity and ethical standards.
- ❑ We will provide planners, policy maker, and program implementers and researchers, especially those in the national health research system, timely, accurate and responsive health and health-related technical information, and likewise ensure that the concerned public is made aware of these information.
- ❑ We will invest in individual and institutional capacities to ensure competence and sustained health and health-related research and development and allied activities.
- ❑ We will, develop a strong health Research and Development network with linkages at local, national and global levels capable of sharing technical, logistical and financial resources for and among its members.
- ❑ We will in the context of devolved health services and as vital Research and Development institution in the region, develop and nurture strong and effective linkages with LGUs, NGOs and the RDC to ensure synergy in the pursuit of overall development efforts.
- ❑ In fulfilling the above functions and conscious of our role as a research and development consortium, the principles of convergence, collaboration and partnership shall underpin our concerted actions and decisions.



Core Values

Commitment, dedication and hardwork. We go beyond the call of duty for the upliftment of the health status and better quality of life of people in the region. We uphold our principles and honor our agreements in the pursuit of excellence in health research.

Competence. We practice/observe high levels of standards in the conduct of our professional and personal affairs. We continue to develop and improve the capability and expertise of health researchers and trainers in order to produce high quality and useful health research outputs for the benefit of our clientele.



Innovativeness and responsiveness. We diligently look for better ways and seek timely solutions to properly address health-related needs and problems of our stakeholders — fellow researchers, policy-makers, program implementers and the public, through efficient utilization of available resources and technologies.

Integrity and honesty. We value our dignity and we will exercise truthfulness, accuracy, and honesty in the conduct of our duties. We will not trade our knowledge, expertise and competence for money, favor or malice. We will observe the rules of intellectual property rights.

Ethical Norms. We respect the value of life, even in its smallest form as we safeguard human dignity and the integrity of the environment. We uphold, to the highest degree possible, ethical standards in all our research undertakings.

God-fearing and humble. We seek understanding of our world and the meaning of life not for selfish ends but for the benefit of our fellowmen and for the glory of God, consciously recognizing the contributions of others.

Respect for individuality and teamwork. We embrace diversity and recognize individual expertise towards a holistic appreciation of the real world. We harmoniously work together, share knowledge, relay information and simplify our procedures for the attainment of the common good - undertaking, producing, and promoting high quality and scientifically sound health and health-related researches through collaboration and networking.



INSTITUTIONAL & HUMAN RESOURCE DEVELOPMENT SUB-COMMITTEE

Vision Statement

- ❑ Highly competent, committed and collaborative researchers and trainers

Mission Statement

- ❑ The Institutional and Human Resource Development Subcommittee will achieve national prominence in research and promote health development by:
 - Providing an environment that fosters intellectual discovery, creative problem solving and the dissemination and application of knowledge in the conduct of research;
 - Conducting research capability-building programs that contribute significantly to health and eventually, social and economic development;
 - Exposing students, health care workers and higher education institution faculty researchers to nationally recognized researchers who are leaders in their disciplines;
 - Offering superior support services to health research clientele; and
 - Establishing national and international partnerships in research

GOAL 1: Expand and strengthen research capability and enhance capacity of the region's health researchers

Medium-term strategies

- ❑ Foster commitment among consortium institutional members and their trainees and trainers especially in being consistent as to their delegates in trainers' and research writers' trainings
- ❑ Promote transfer of knowledge and skills in health research from experts to trainers through training, coaching and mentoring



ETHICS REVIEW SUB-COMMITTEE

Vision

- Ethically compliant research results

Mission

- The Ethics Review Subcommittee through collaboration strategies involving public and private institutions will promote and manage ethics review activities in the region



Goals

- Continue to be responsive in the review of research proposals in the region
- Strengthen the monitoring of compliance with the ethical and legal standards of researches

Actions/ Measures/ Projects	Targets	Performance Indicators	Cost Requirements
Evaluation of adherence to Ethical Standards (Clearance)	# of approved paper	To be determined	5,000.00
Monitoring	# of being conducted	To be determined	20,000.00
Training	Participants	To be determined	150,000.00
Establishment of ERC in Member Institution	2		10,000.00

RESEARCH & DEVELOPMENT SUBCOMMITTEE

R & D Vision

The Research and Development SubCom of R1HRDC shall be the forefront in establishing a vibrant research culture in the Region, producing high quality research outputs through interagency linkages, providing timely, accurate, and responsive technical information for enhancing the efficiency and effectiveness of health planning, policy and operational activities of various stakeholders.



R & D Mission

Guided by our Vision, we commit to fulfill the following missions:

- We will be the forefront in establishing a vibrant research culture in the Region
- We will continuously provide time and best effort in providing technical assistance to researchers
- We will promote the establishment of linkages with several health research institutions and encourage collaborative research in terms of equipment, personnel, technical, and funding assistance not only in the regional level but up to the international level

Goal

- To conduct annual health research agenda formulation and regular revision based on the National Unified Health Research Agenda and the immediate health-related problems of the Region and ensure quality health research outputs.

Medium Term Strategies

1. Conduct a major collaborative research in the region involving several sectors to address health issues in the best possible manner.
2. Promote & conduct policy and multisectoral researches with impact in improving government and non-government health-related service delivery.
3. Establish linkages with other Regional, National and International Research Communities.

Actions/ Measures/ Projects	Targets	Performance Indicators	Cost Requirements
Institutionalization of Research process in the region	On-going	Increase number of protocols	40,000.00
Multi-sectoral involvement in a research topic	2-3 institution/topic	Number of researches with multi-sectoral involvement	1,500,000.00
A Research Program with subtopic components	1 paper	Number of researches and groups involved	1,500,000.00
Research with policy and program impact	60-75% of research	Number of approved research	500,000.00
Quality Assurance Study and Customer Satisfaction	20-25% of research	Number of research	500,000.00

RESEARCH INFORMATION AND COMMUNICATION UTILIZATION SUB-COMMITTEE

Vision Statement

- ❑ A health-research conscious stakeholders mindful of its importance for the improvement of life through the collaborative dissemination of researches

Mission Statement

- ❑ The RICU SubCom will collect, package, disseminate research outputs in partnership with the Research and Development Sub-committee, and work together with health and allied agencies, both public and private, for their effective and efficient use in accordance with the vision/mission of R1HRDC and PCHRD



GOAL 1: Develop a research information utilization plan for various clientele

Strategies

- ❑ Manage and operationalize the website;
- ❑ Maintain a place for stakeholders to do research and where databases can be stored
- ❑ Update stakeholders on the activities of R1HRDC and its member-agencies

Actions/Measures/ Projects	Targets	Performance Indicators	Cost Requirements
a. R1HRDC Newsletter b. Website c. Info Center	2x a year 1 operational website 1 Info Center	- Semi-annually - Operational website - Operational center	Php25,000/yr Php12,000/yr Php24,000/yr

GOAL 2: Collect, package and disseminate new research information

Strategies

- ❑ Collect, package and disseminate research outputs
- ❑ Source out new avenues in disseminating research outputs

Actions/Measures/ Projects	Targets	PI's	Cost Requirements
a. Inventory of Research Abstracts b. Database Management and Updating c. Conduct of Radio Program	50 abstracts/quarter 4x a year	Quarterly Monthly Quarterly	Php10,000/yr Php10,000/yr

GOAL 3: Collaborate with health and allied agencies for the effective use and even commercialization of research results

Strategies

- ❑ Coordinate with agencies, public or private, for the commercialization of research outputs
- ❑ Monitor the utilization of health research outputs
- ❑ Listing of research experts and trainers in the region

Actions/Measures/ Projects	Targets	PI's	Cost Requirements
a. Forum for the dissemination /utilization of health research results b. Monitoring of research utilization c. Inventory of experts and trainers	Once a year Once a year	Annual Annual Annual	Php 25,000.00